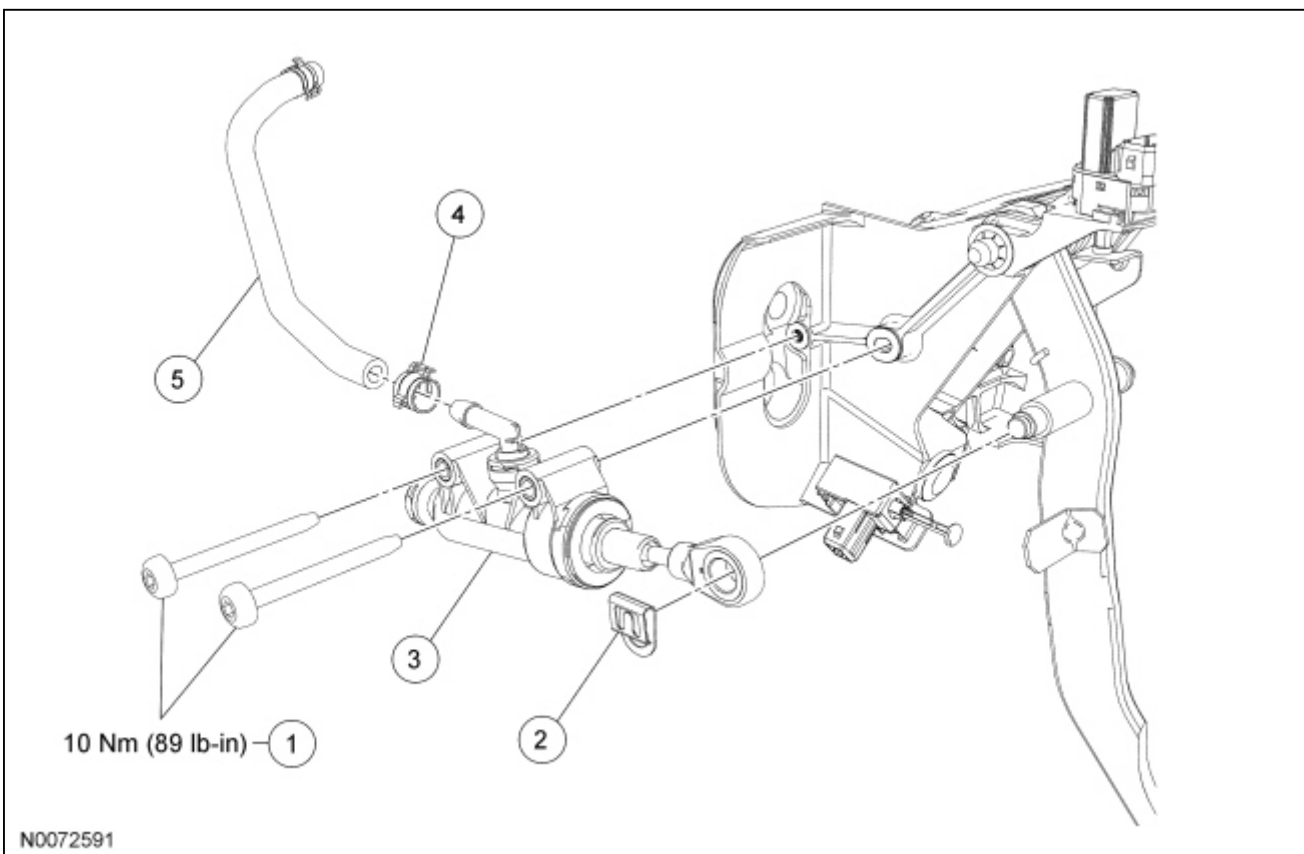


Clutch Master Cylinder

Material

Item	Specification
High Performance DOT 3 Motor Vehicle Brake Fluid PM-1-C (US); CPM-1-C (Canada)	WSS-M6C62-A or WSS-M6C65-A1



Item	Part Number	Description
1	—	Clutch master cylinder bolts (2 required)
2	—	Retaining clip
3	7A543	Clutch master cylinder
4	—	Hose clamp
5	—	Reservoir hose

Removal and Installation

⚠ WARNING: Carefully read cautionary information on product label. For EMERGENCY MEDICAL INFORMATION seek medical advice. In the USA or Canada on Ford/Motorcraft products call: 1-800-959-3673. For additional information, consult the product Material Safety Data Sheet (MSDS) if available. Failure to follow these instructions may result in serious personal injury.

NOTICE: Do not spill brake fluid on painted or plastic surfaces or damage to the surface may occur. If brake fluid is spilled onto a painted or plastic surface, immediately wash the surface with water.

1. Remove the brake pedal and bracket assembly. For additional information, refer to [Section 206-06](#).
 2. Remove the retaining clip from the clutch pedal pin.
 3. Remove the 2 clutch master cylinder bolts, then disconnect the clutch master cylinder from the clutch pedal.
 - To install, tighten to 10 Nm (89 lb-in).
 4. Remove the reservoir hose from the clutch master cylinder.
 5. To install, reverse the removal procedure.
 - Install new hose clamps on the reservoir hose.
 - Bleed the clutch hydraulic system. For additional information, refer to [Section 308-00](#).
 - Refill the brake and clutch reservoir with the specified fluid.
 - Check the clutch for normal operation.
-